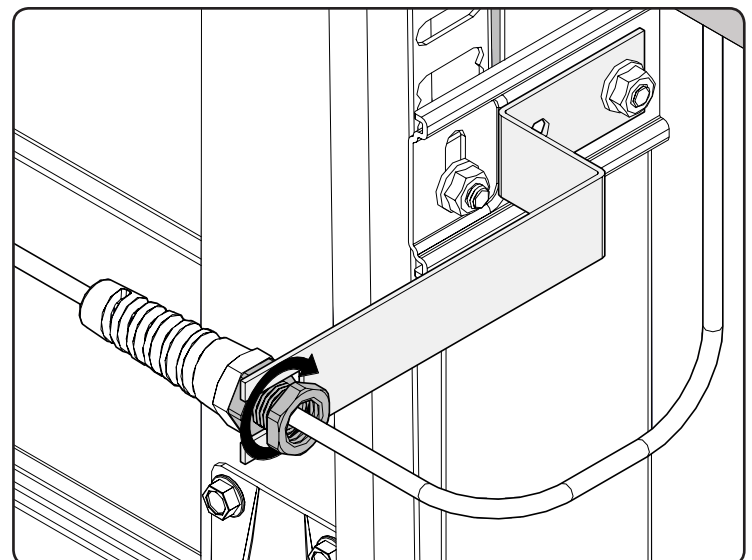
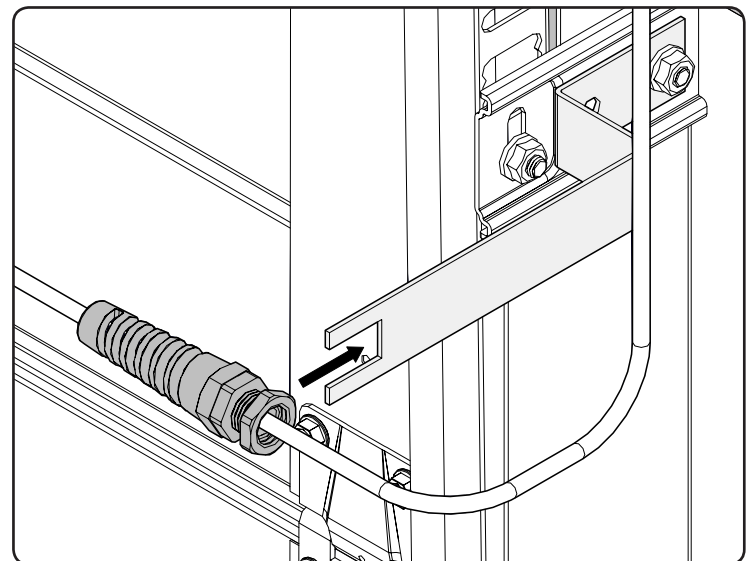
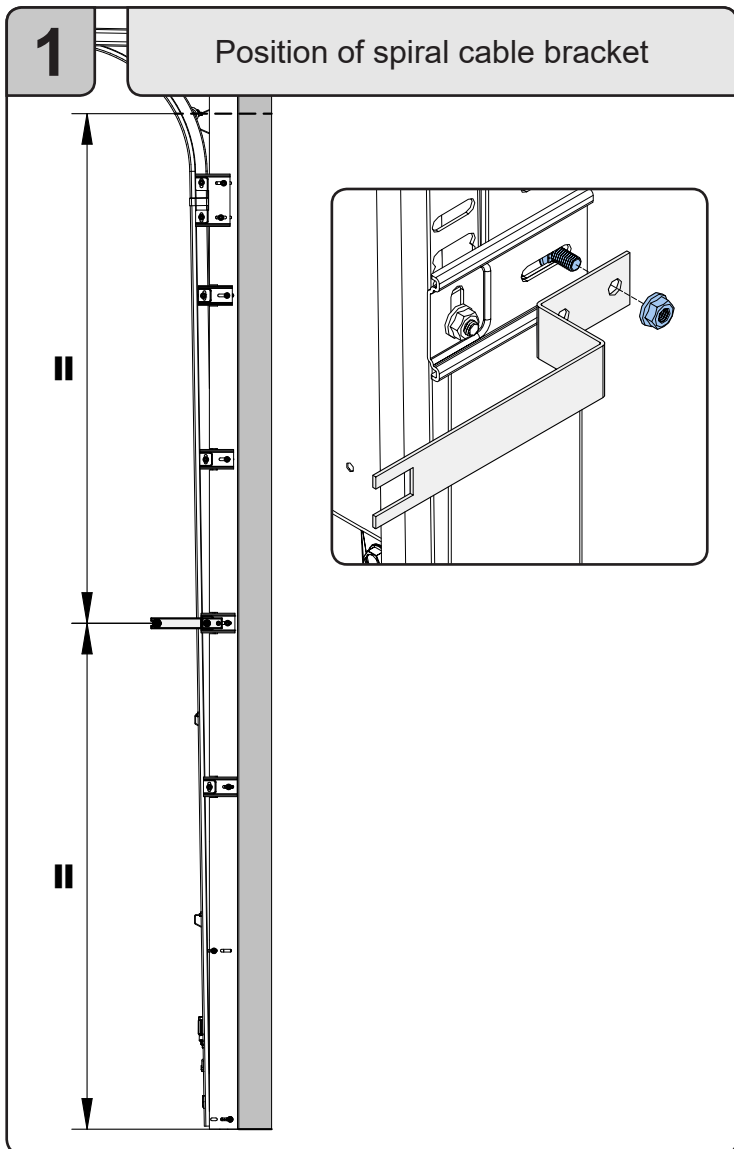
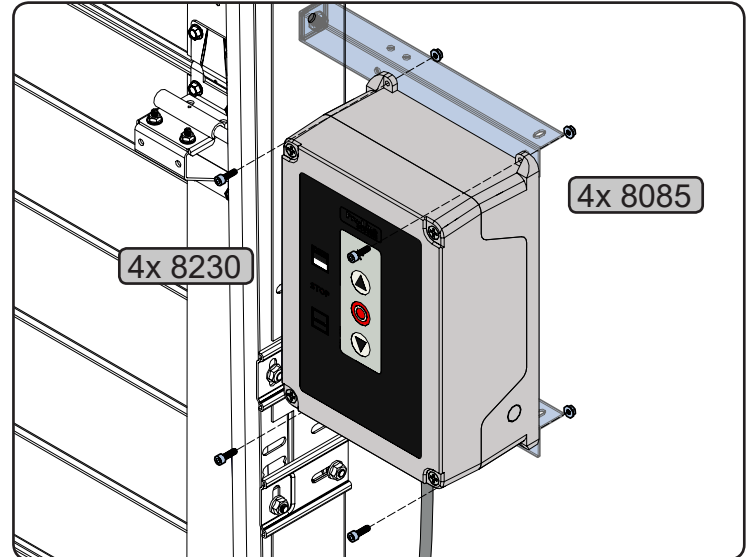
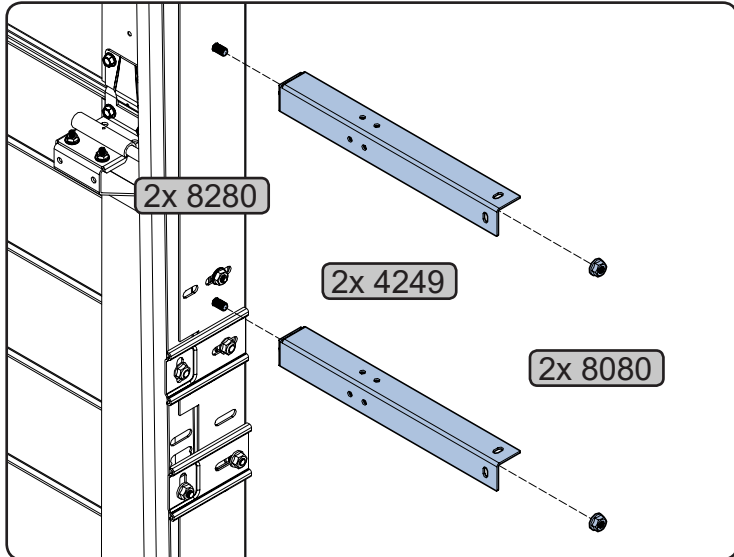
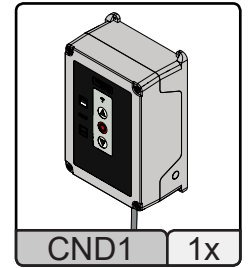
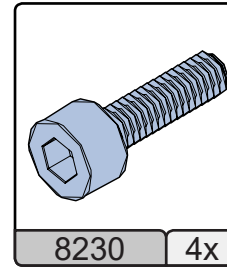
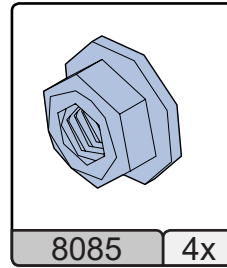
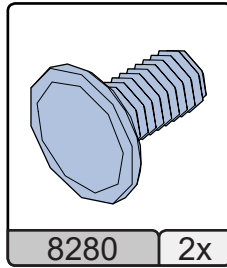
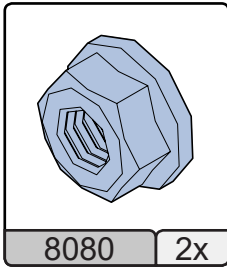
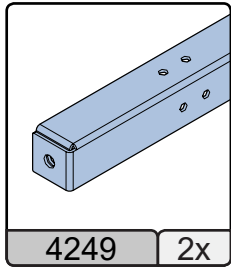
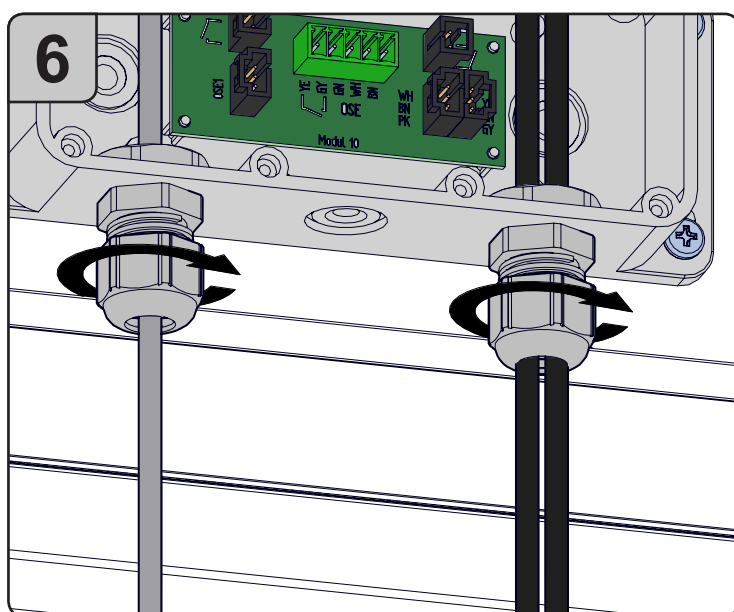
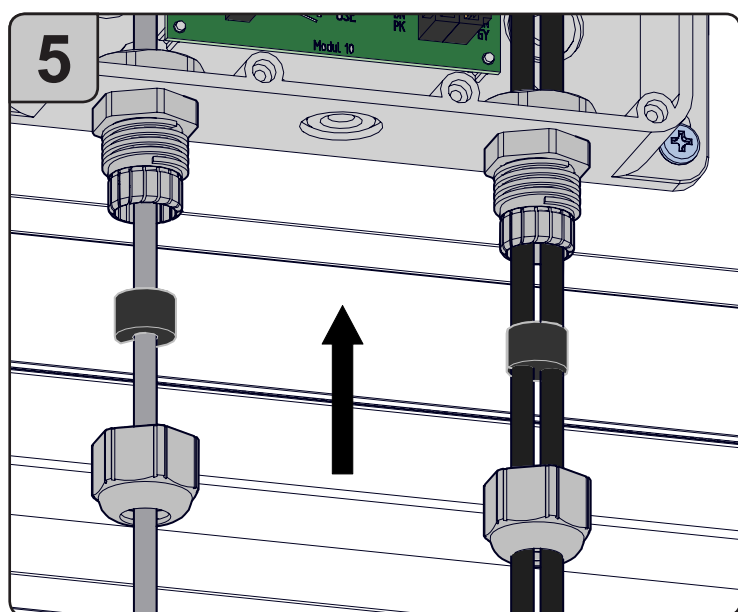
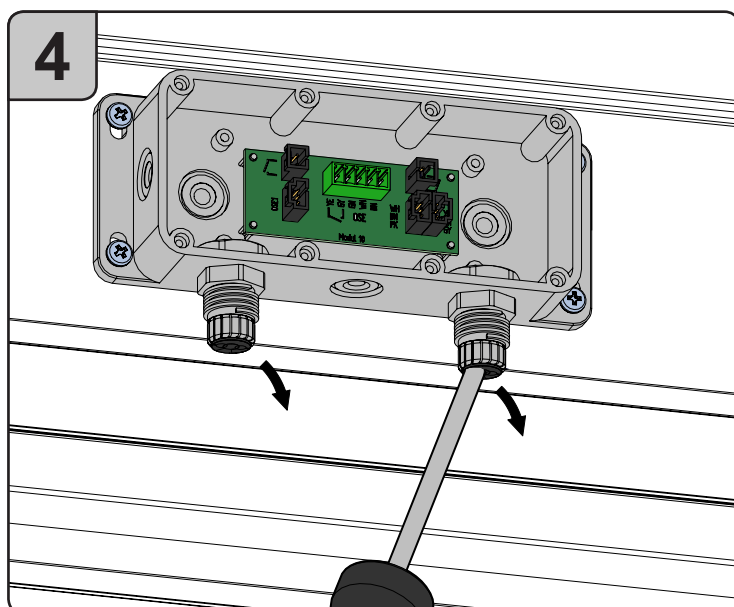
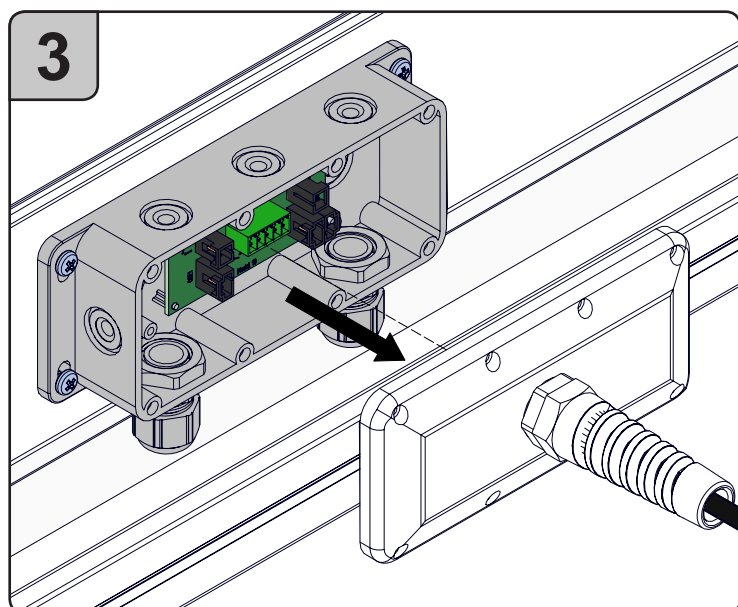
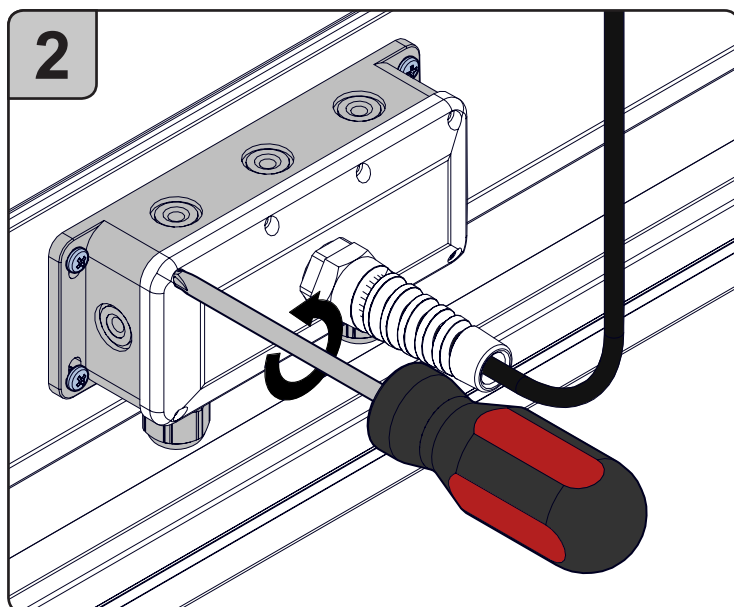
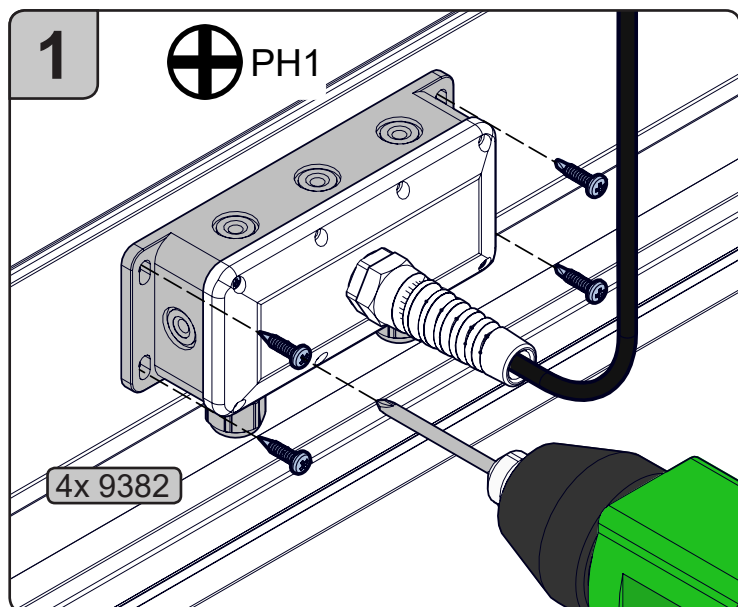


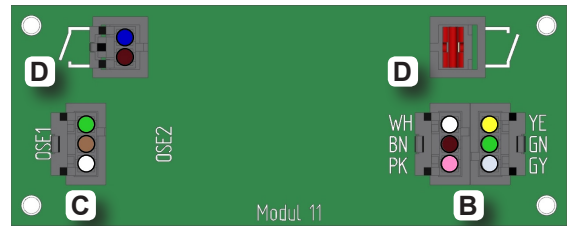
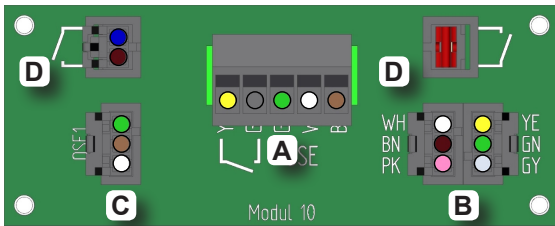
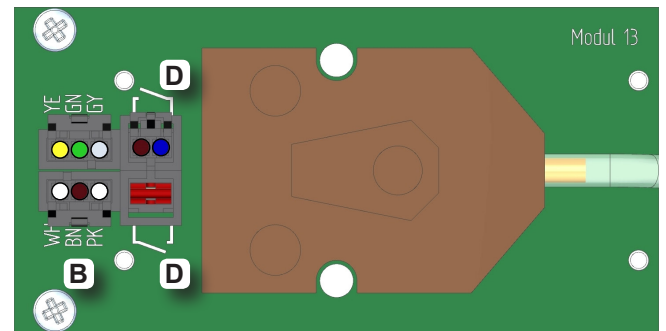
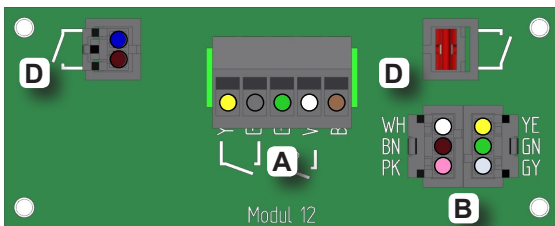
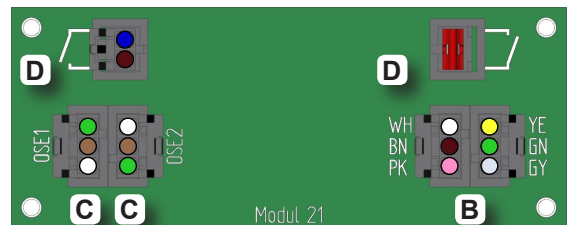
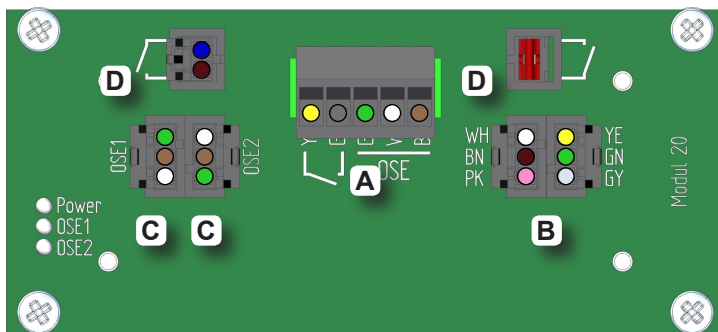
# CND1 - Quick start guide

EN

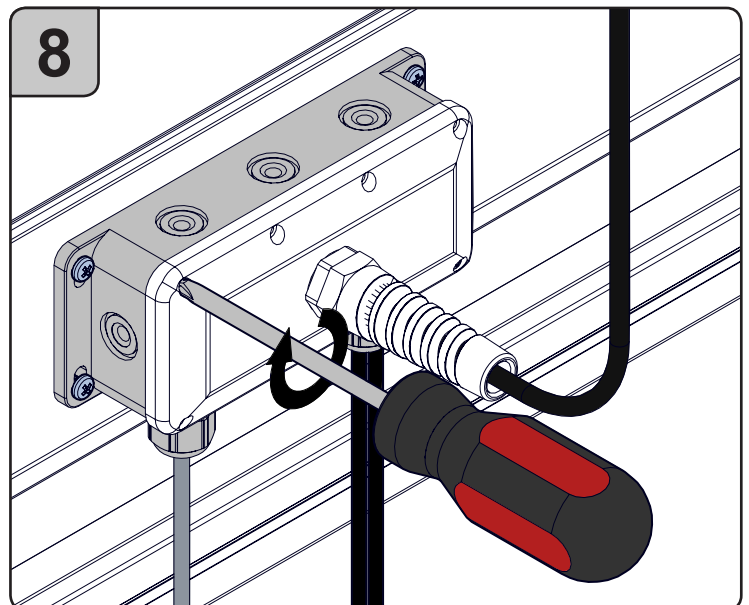


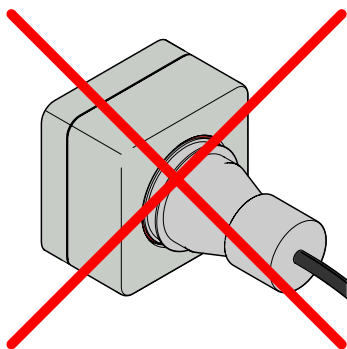




**Opto: Module 10 + 11****DW: Module 12 + 13****Duo Opto: Module 20 + 21****Connections**

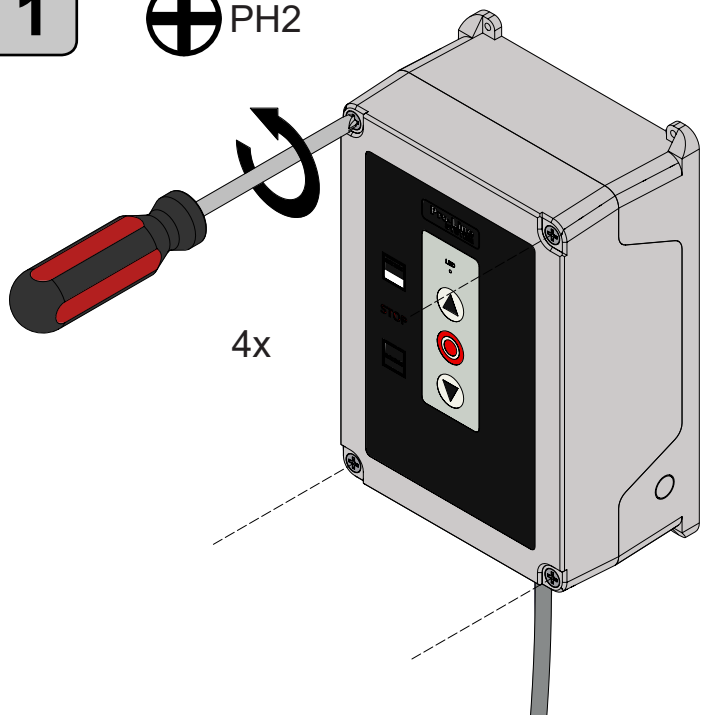
- A = Spiral cable
- B = Connecting cable
- C = OPTO / OSE1 / OSE2
- D = SCD L/R / PD Switch



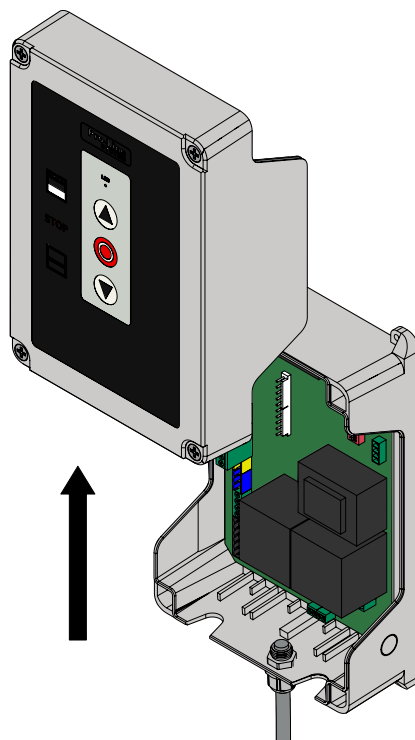


**NOTE!** Do not plug in CEE plug yet!

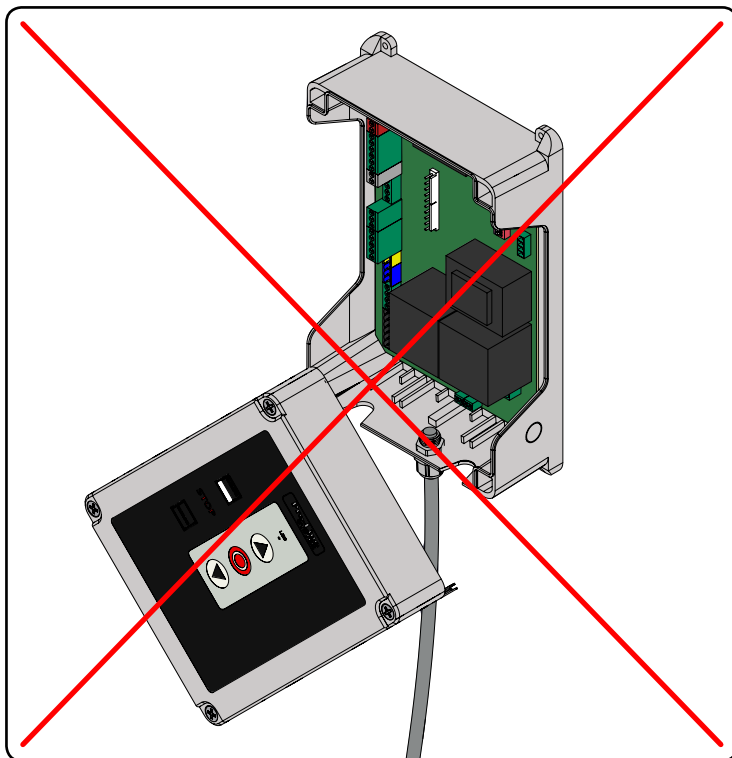
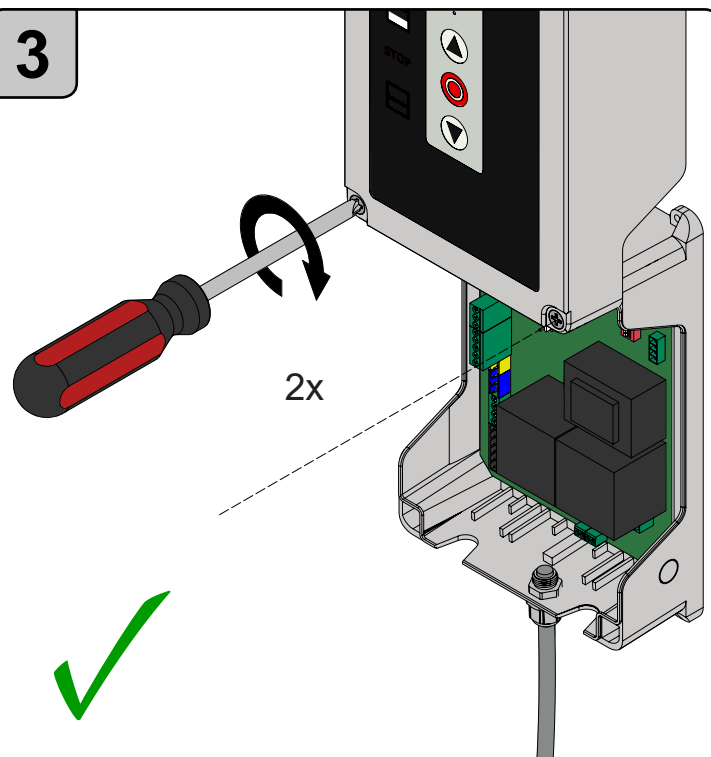
1

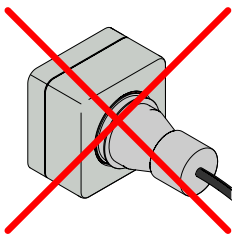


2



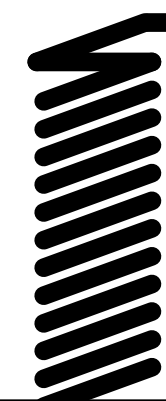
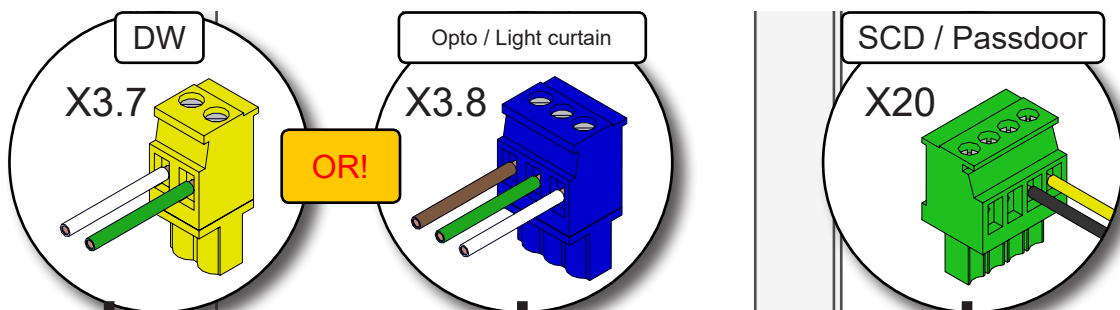
3



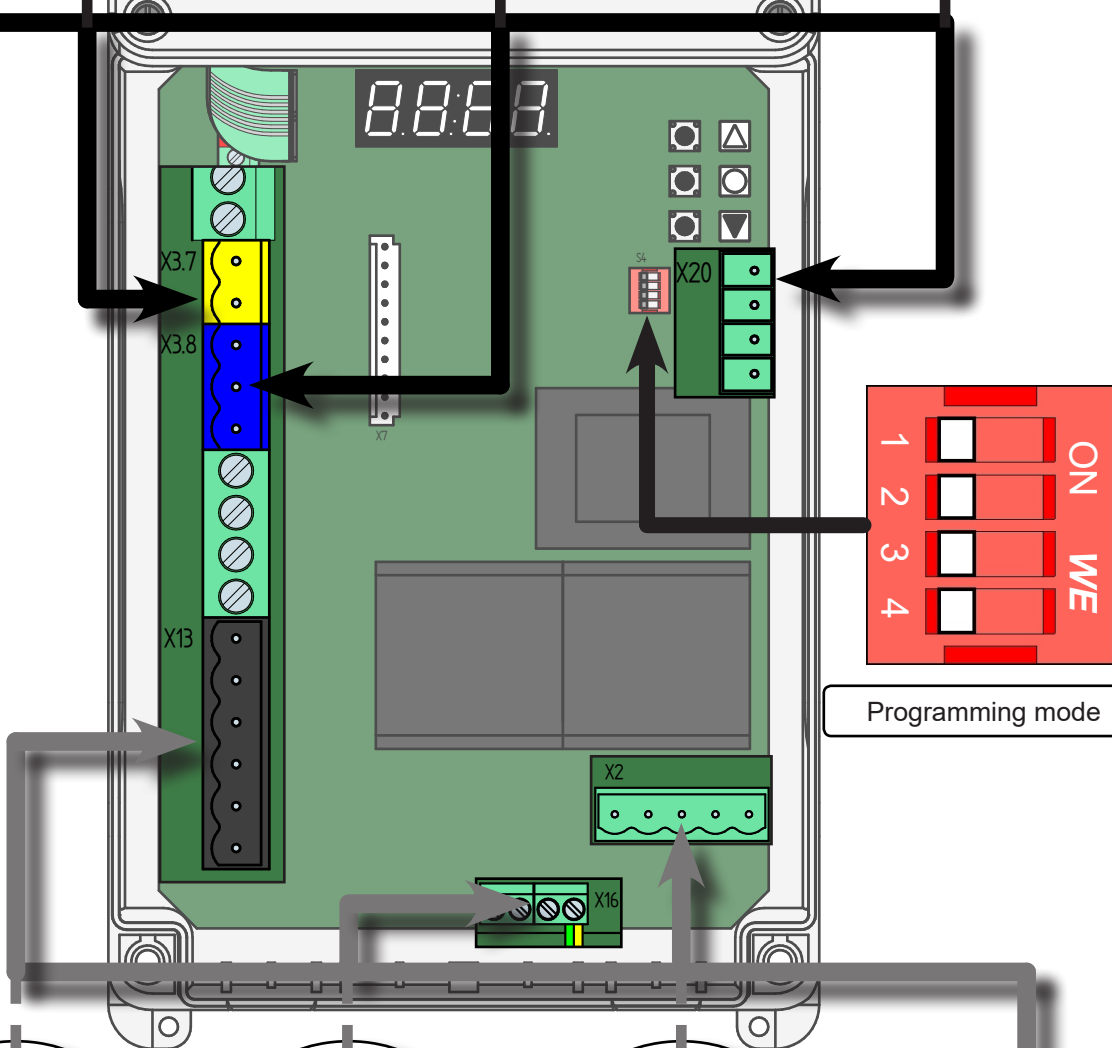


**NOTE!** Do not plug in CEE plug yet!

4

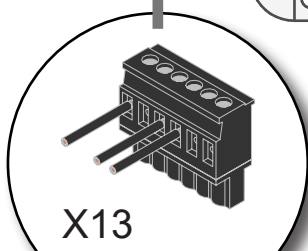


Spiral cable

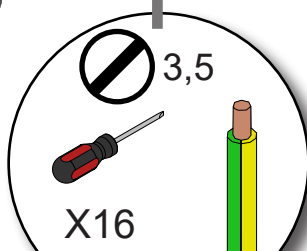


Programming mode

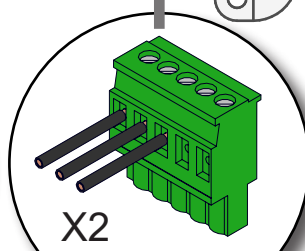
5



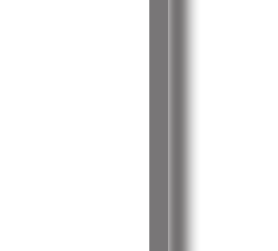
Shaft drive encoder



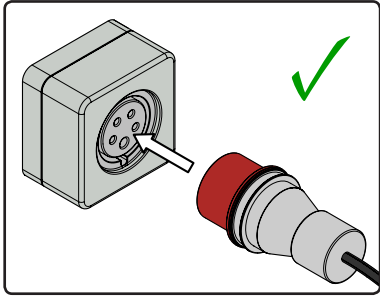
Shaft drive ground wire



Shaft drive feed



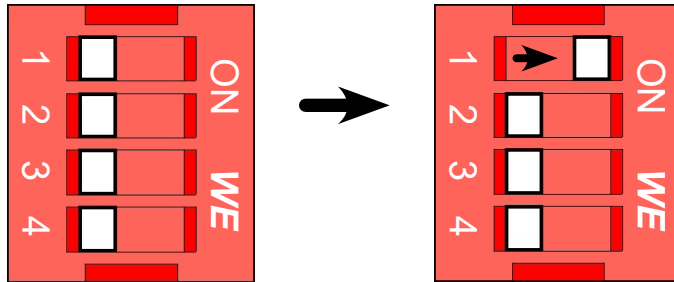
Shaft drive cable



**NOTE!** Plug in the CEE plug to program the control box.

### Activate programming mode

1



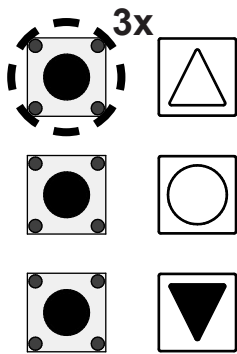
Move switch 1 to ON



Display

### Determine open door position

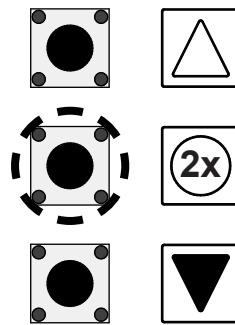
2



Until  
Display:



3

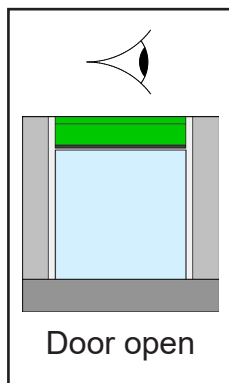
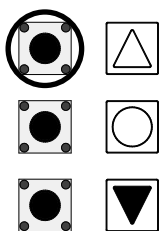


=  
Display:



4\*

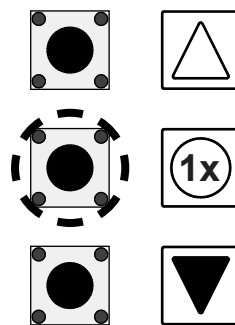
Keep  
pressed



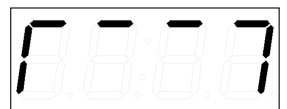
Door open

Release  
button

5

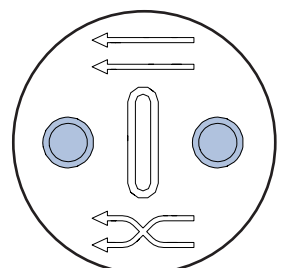
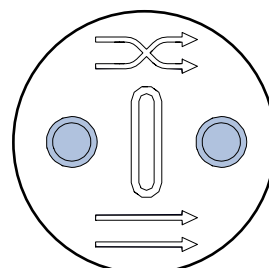
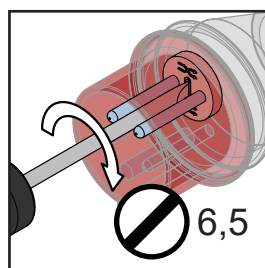


=  
Display:



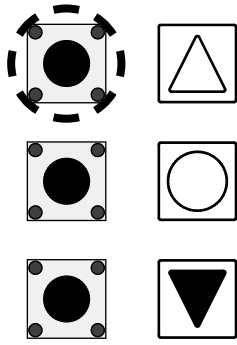
4 sec.

**\*NOTE:** If the door does not move upwards but downwards when the UP button is pressed, the phases in the CEE plug must be reversed. Use a slotted screwdriver to do so. Then repeat steps 2 through 5.

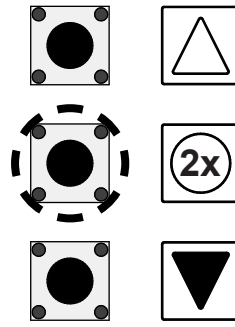


## Determine closed door position

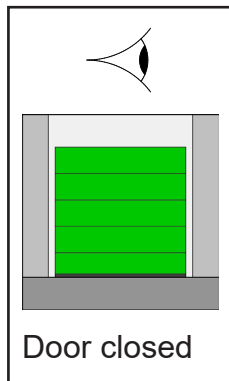
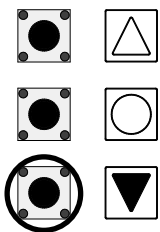
6

Until  
Display:

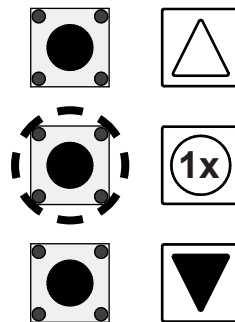
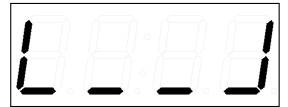
7

=  
Display:

8

Keep  
pressedRelease  
button

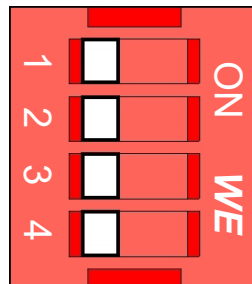
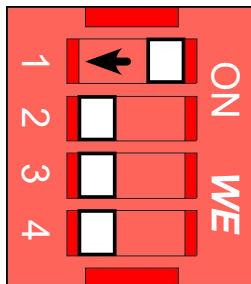
9

=  
Display:

4 sec.

## Exit programming mode

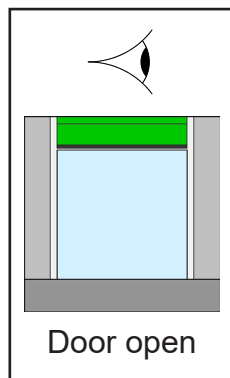
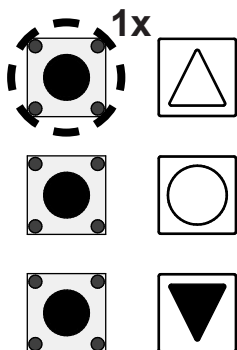
10



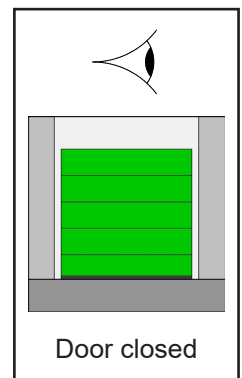
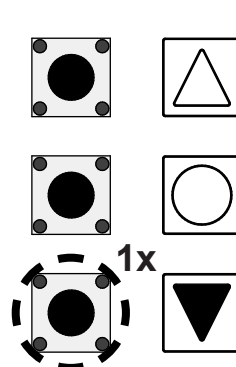
Move Switch 1 to OFF

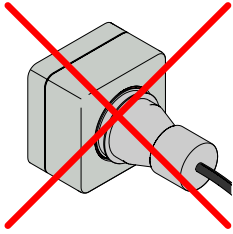
## Check the operation of the door

11



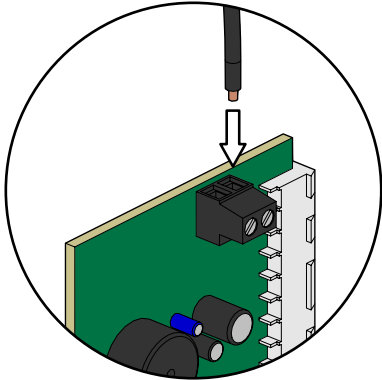
12





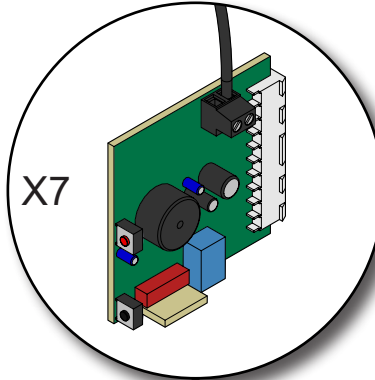
**NOTE!** Only plug in the CEE plug and peripheral equipment after connecting all of the plug-in plugs in the way described below.

1

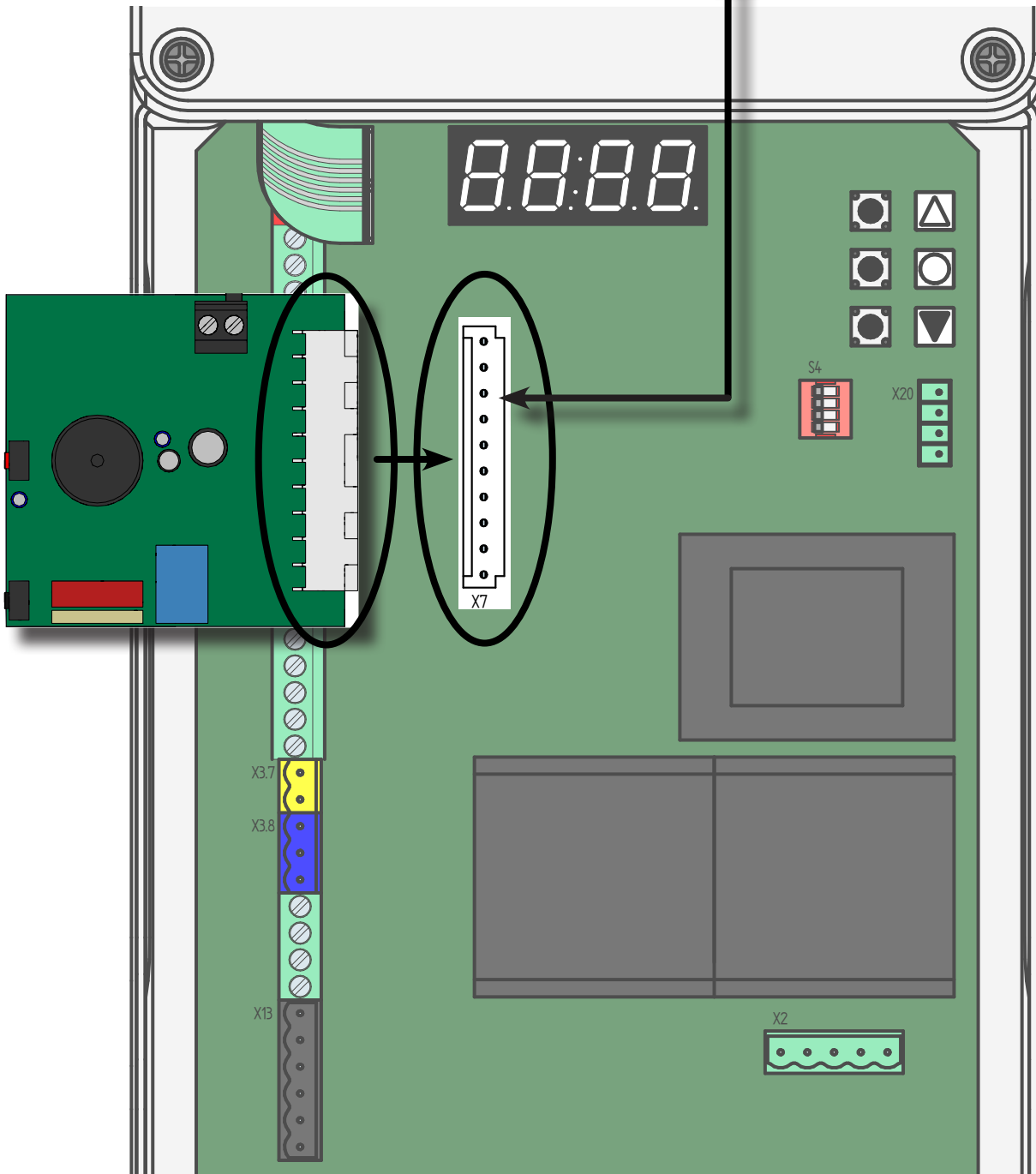


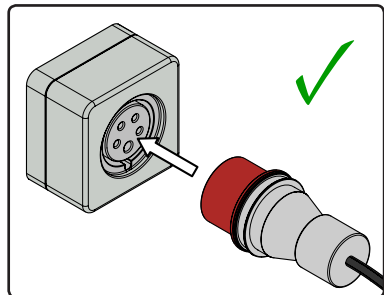
2

X7

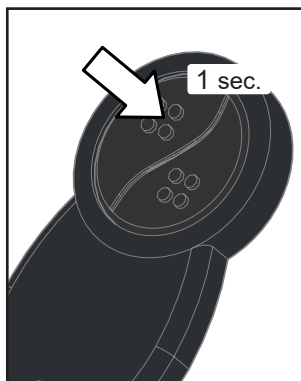
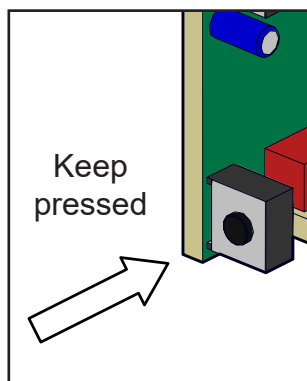


**NOTE!** Insert the plug-in circuit board firmly to ensure a good contact.





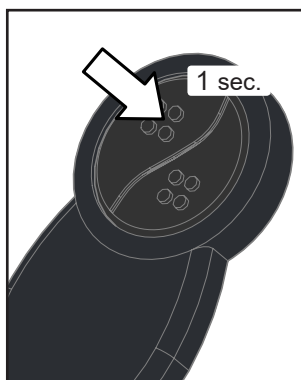
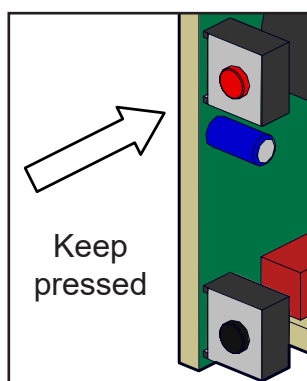
**NOTE!** Plug in the CEE plug to be able to connect to the remote control.

**1**

A sound will be made as long as the button on the plug-in circuit board is pressed. At the same time, press the button on the remote control!

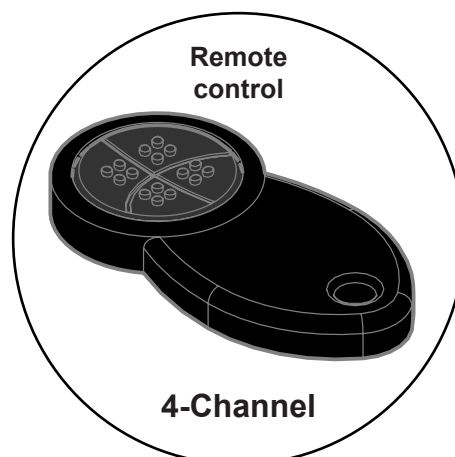
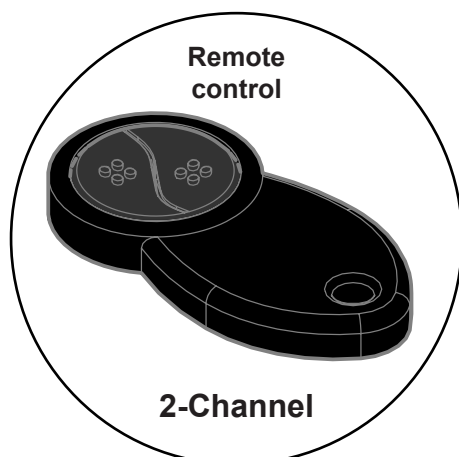
Test the operation of the remote control. Repeat the connection procedure if it does not work.

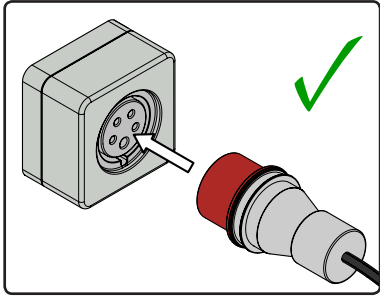
### Pro-Line 28/50/70 CND1 - Disconnecting the remote control

**1**

A sound will be made as long as the button on the plug-in circuit board is pressed. At the same time, press the button on the remote control!

Test the operation of the remote control. Repeat the disconnection procedure if it does not work.

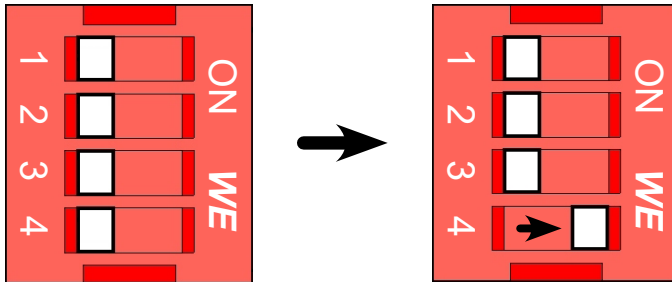




**NOTE!** Plug in the CEE plug!

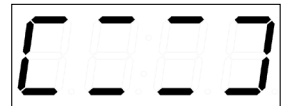
### Switch DIL switch

1



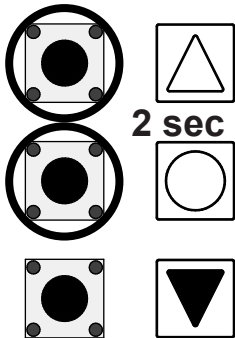
Move switch 4 to ON

Display:



### Reinstall CND1 factory settings

2



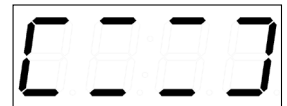
Display:



Display:

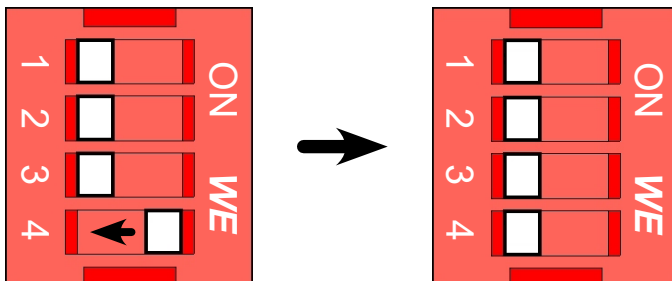
Version Number

Display:



### Move DIL switch to OFF

3



Move Switch 4 to OFF



